

BMS COLLEGE OF ARCHITECTURE

Bull Temple road ,Bengaluru - 560004

BMS College of Architecture is a distinguished institution imparting quality architectural education for over Four decades. BMSCA is affiliated to the Visvesvaraya Technological University, Belagavi and recognized by the Council of Architecture, New Delhi. The institution is among the top architecture institutions at the National level and is ranked 21st in NIRF 2023 Ranking.

M.ARCH (HABITAT DESIGN)

ADMISSIONS OPEN FOR 2023-24

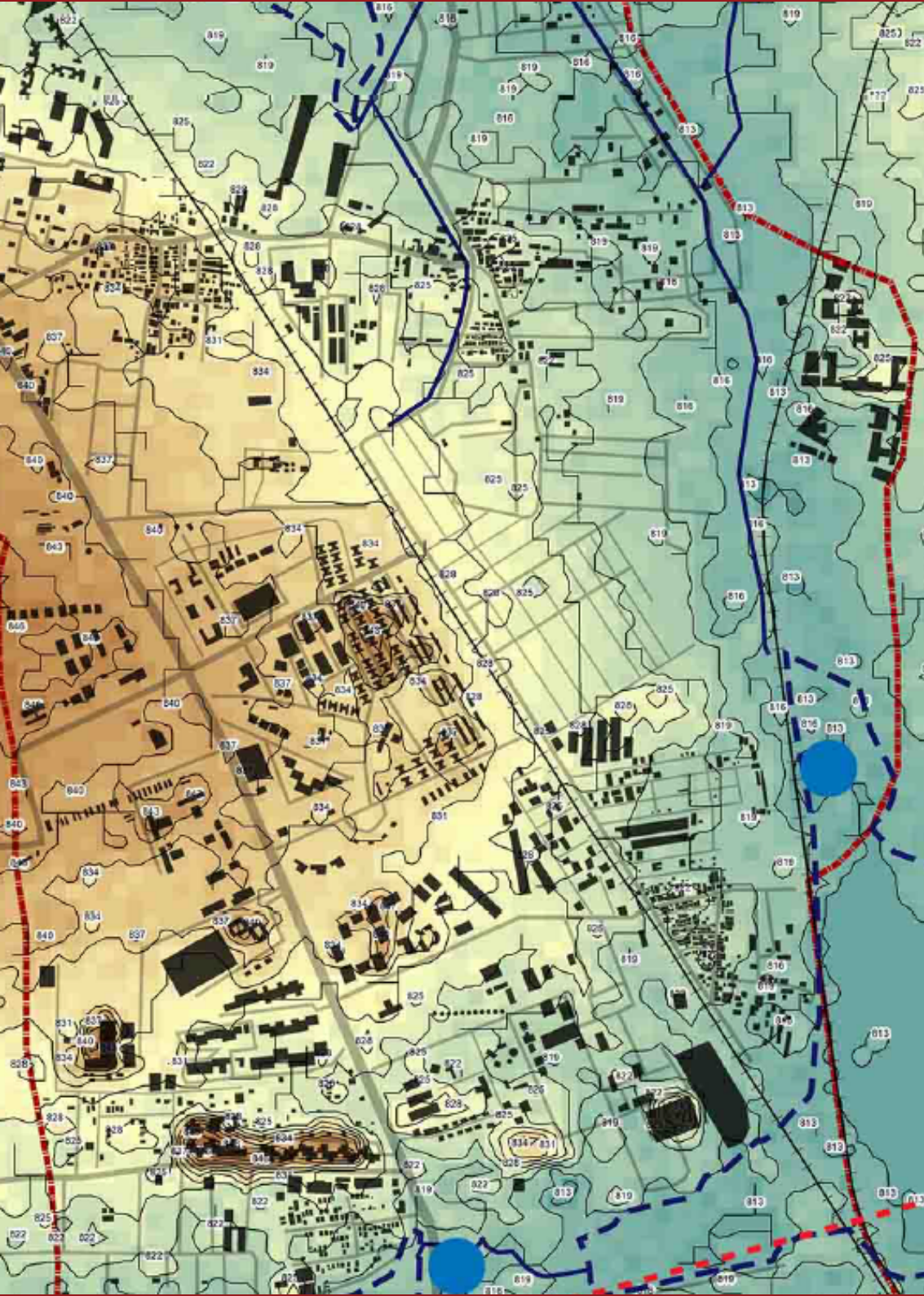
ABOUT THE PROGRAM

The Two-year (Full Time) Post-Graduate Program in Habitat Design commenced in 2005. The Program is affiliated to Visvesvaraya Technological University and recognized by Council of Architecture. The program is student centric by inculcating a multi-disciplinary approach.

The courses are structured across Four Semesters with mandatory Practical Training for 8 Weeks between Second and Third Semester. The syllabus is updated regularly to make it more relevant to respond to academic and industry requirements.

The Program offers a comprehensive approach that encompasses Settlement Planning and Design through studio-based projects and supportive theory courses.

The students interpret habitat systems by recognizing the structural and functional relationships of habitats which are informed through natural, social, economic and administrative contexts. The program assists students to inculcate methods, tools and techniques to identify, synthesize and generate dialogues with respect to Human Habitat and its relationships.



PROGRAM STRUCTURE

The **First Semester** emphasizes understanding Human Habitat as a System by recognising the underlying relationships,

Second Semester accentuates the complexities of habitat and the nuances of regenerating existing habitat systems in urban core.

The **Third Semester** introduces students to dynamic parameters which determine the future Habitat Systems through Green field Development Projects.

The **Fourth Semester** offers an opportunity for students to demonstrate the comprehensive understanding of habitat system through project strengthened by research and documentation.

The **Internship** of 8 weeks between Second and Third semester assists in evolving a practical approach. The electives at all levels assist in further strengthening the relevance of the program.

ELIGIBILITY

- Candidates with Bachelor's degree in Architecture (B.Arch) or equivalent recognized by Council of Architecture, New Delhi
- 50% or more marks in qualifying B.Arch exam.
- Candidates should pass in PG CET (Post Graduate Common Entrance Test) conducted by KEA (Karnataka Examination Authority) or GATE Examination.

ADMISSION PROCEDURE

1. Admission through Karnataka Common Entrance Test Counselling. Please follow KEA (Karnataka Examinations Authority) website. <https://cetonline.karnataka.gov.in/kea/>
2. Direct Admission. Students may approach office of BMS Educational Trust, Bull Temple Road with GATE or PG CET score for admissions

Please visit BMSCA website www.bmsca.org to register.
Call 91-9900084761 OR write to admissions.pg@bmsca.org

[FOR ADMISSION ENQUIRY REGISTRATION CLICK HERE](#)

SHANTHALA V
PG- CO-ORDINATOR, BMSCA

DR. MAMATHA P RAJ
DIRECTOR, BMSCA